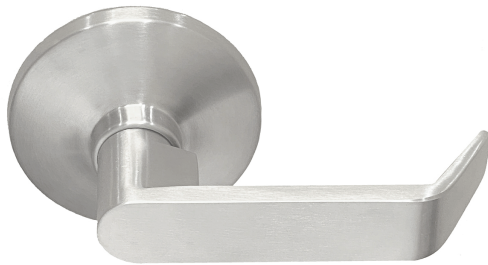


BETTER HOME PRODUCTS

EDTL01 SERIES EXIT DEVICE PASSAGE TRIM LEVER



Lifetime Mechanical Warranty
and 5 Year Finish Warranty



- * Grade I heavy duty trim lever for exit devices
- * Stainless Steel lever piece and rosette cover
- * ADA compliant
- * Full length lever handle
- * Packed with mounting hardware



ITEM NUMBERS:

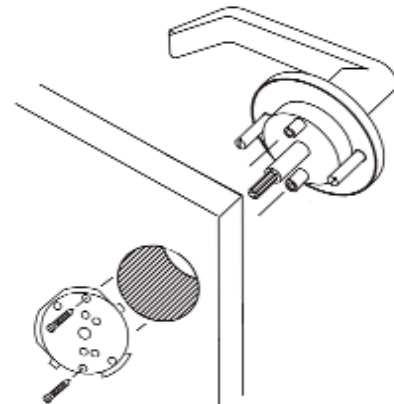
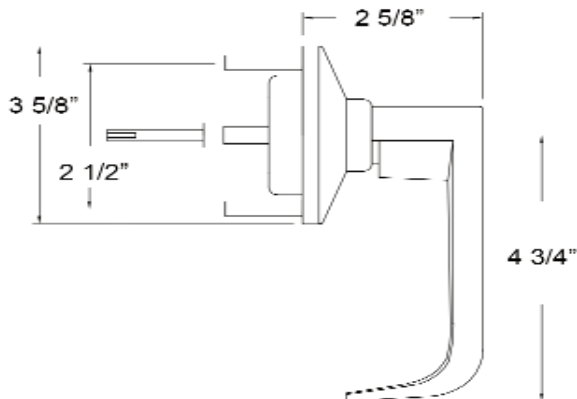
EDTL01PASBLK - Exit device passage trim lever- Matte Black Finish

EDTL01PASCH - Exit device passage trim lever - Polished Stainless Steel (Chrome) finish

EDTL01PASSN - Exit device passage trim lever - Brushed Stainless Steel (SN) finish

FEATURES

- * For use with BHP 300, 400 and 500 series fire-rated and non-fire rated rim latch and vertical rod exit devices
- * Fits door thickness 1 3/4" to 2 1/4"
- * Fits and covers 161 cutout
- * Trim lever always operable and free
- * Non-Handed



CROSS REFERENCE

BHP	CALROYAL	SARGENT	STANLEY
EDTL01	PAS30L	28	QRT330