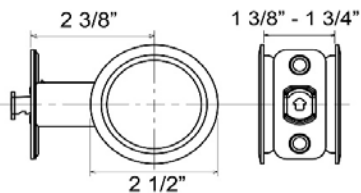
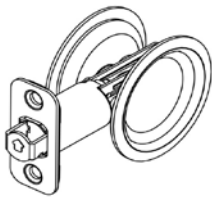


BETTER HOME PRODUCTS

ROUND BORE POCKET DOOR LOCKS SPECIFICATIONS

Fits Doors Prepped with Standard 2 1/8" Round Bore



BHP ITEM#: 819CH Chrome Finish
819SN Satin Nickel Finish
819DB Dark Bronze Finish

Passage Set

Fits doors prepped with standard round bore

Door Prep - Crossbore 2 1/8", edge bore 1", latch face 1" x 2 1/4" radius corner

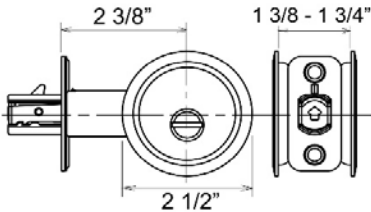
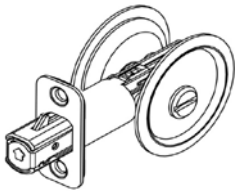
Door Thickness - 1 3/8" to 1 3/4"

Function: No locking device. Retractable pull-piece for easy door sliding

Strike - No strike plate

Backset: - 2 3/8" non-adjustable

Door Handing - Non-handed



BHP ITEM: 820CH Chrome Finish
820SN Satin Nickel Finish
820DB Dark Bronze Finish

Privacy Set

Fits doors prepped with standard round bore

Door Prep - Crossbore 2 1/8", edge bore 1", latch face 1" x 2 1/4" radius corner

Door Thickness - 1 3/8" to 1 3/4"

Function: Locked or unlocked by turn piece inside. Slot outside for emergency open. Retractable pull-piece for easy door sliding

Strike - Packed with 1 Pc 1 1/4" x 2 3/4" radius corner strike plate

Backset - 2 3/8" non-adjustable

Door Handing - Non-handed